



What's on the ballot?

BOND REFERENDUM
Question #1 - \$155,000,000



\$0.00 PER MONTH

BOND IS FOR BUILDING

If approved, keeps tax rate the same (due to old debt being replaced with new) while funding necessary building improvements and maintenance. These dollars would be used for a new elementary school to serve Grant and Lincoln students, district-wide safety and security updates, elementary and middle school remodels and additions, modernization, infrastructure and technology improvements.

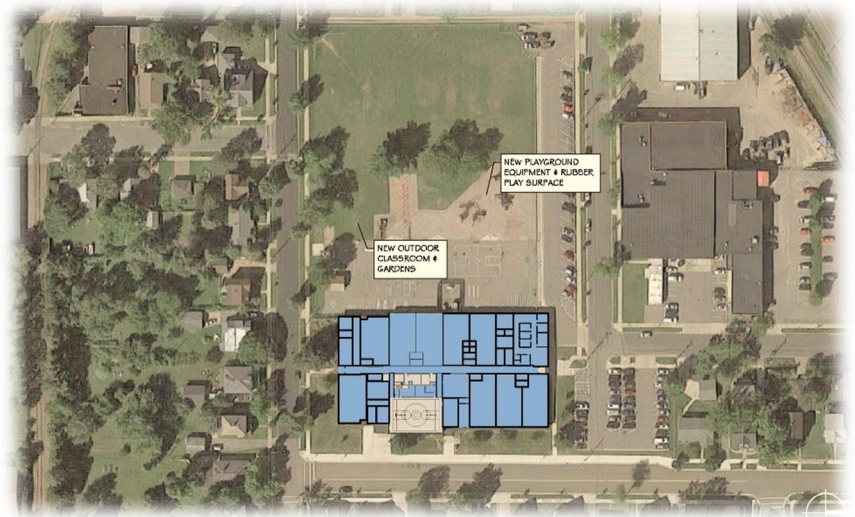
OPERATIONAL REFERENDUM
Question #2 - \$3,000,000



\$0.00 PER MONTH

LEVY IS FOR LEARNING

If approved, keeps tax rate the same (due to old debt being replaced with new) while funding the additional staffing needed to provide full pupil service teams at each elementary school. These dollars would also be used for operational expenses.



Lincoln-Montessori School

If passed, the November 3rd referendum would include the funding needed to improve and transition Lincoln into a permanent space for an expanded Montessori School:

Safety & Security Enhancements

- Relocate main office area and create secure entrance
- Upgrade fire alarm, clock and PA systems, emergency generator

Learning Space Modernization

- Renovate interior for classrooms, cafeteria and multi-purpose space
- Replace student cubbies
- Create outdoor classroom and gardens
- Toilet room renovations and ADA upgrades
- Update technology (equipment, spaces, access)

Building Repairs

- Upgrade HVAC systems for improved air quality and temperature
- Address required maintenance (LED lighting, windows, flooring, roofing)
- Update playground surfaces and equipment
- Add parking and sidewalks

Student Support Space Expansions

- Reconfigure existing space for Special Education classroom
- Add staff to provide full pupil services teams (Question #2)

SEE PROPOSED PLAN ON BACK



FIRST FLOOR PLAN

